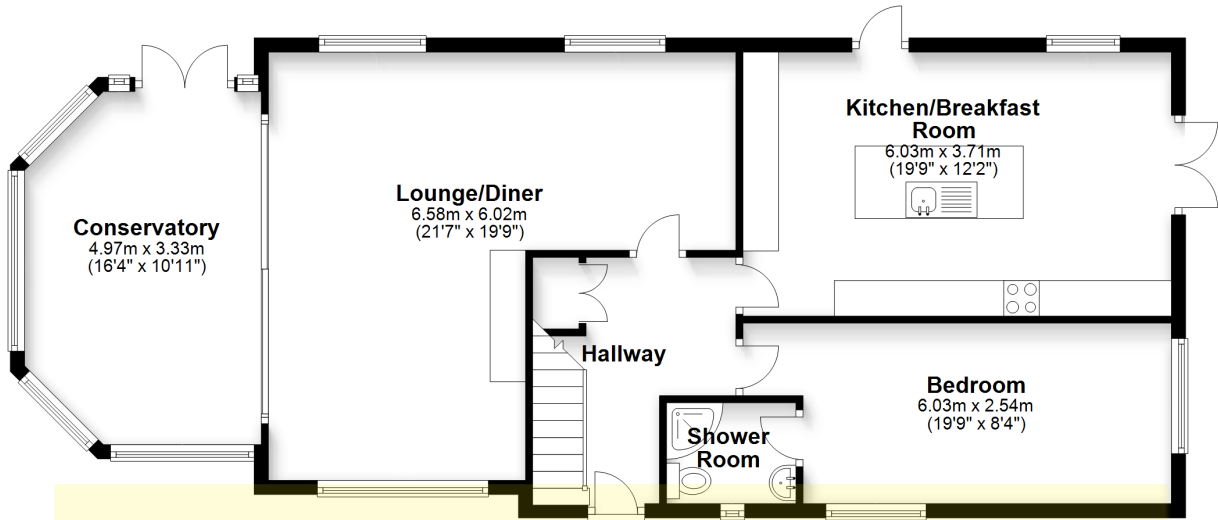


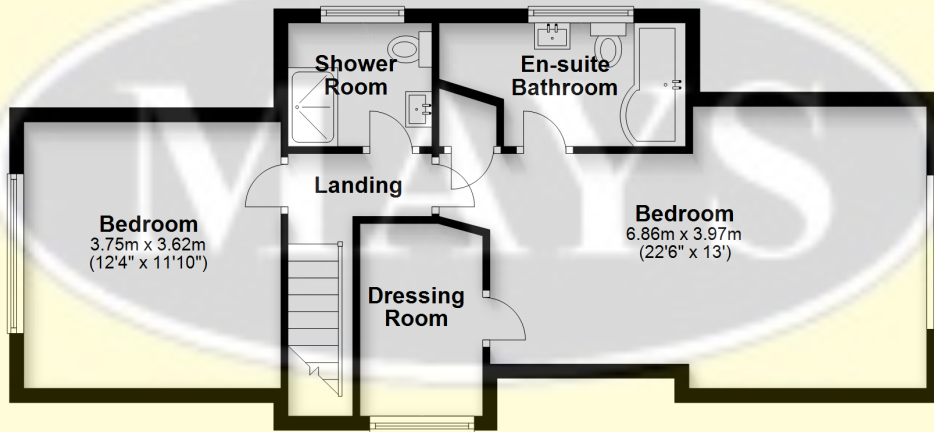
### Ground Floor

Approx. 95.3 sq. metres (1025.7 sq. feet)



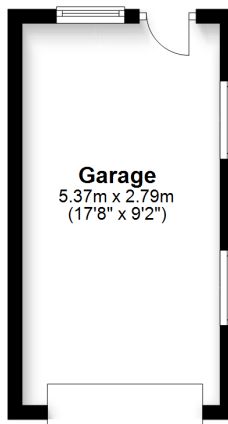
### First Floor

Approx. 56.2 sq. metres (604.8 sq. feet)



### Garage

Approx. 15.0 sq. metres (161.1 sq. feet)



Total area: approx. 166.4 sq. metres (1791.6 sq. feet)

Bournemouth Energy Floor Plans are provided for illustration/identification purposes only. Not drawn to scale, unless stated and accept no responsibility for any error, omission or mis-statement. Dimensions shown are to the nearest 7.5 cm / 3 inches. Total approx area shown on the plan may include any external terraces, balconies and other external areas. To find out more about Bournemouth Energy please visit [www.bournemouthenergy.co.uk](http://www.bournemouthenergy.co.uk) (Tel: 01202 556006)  
Plan produced using PlanUp.