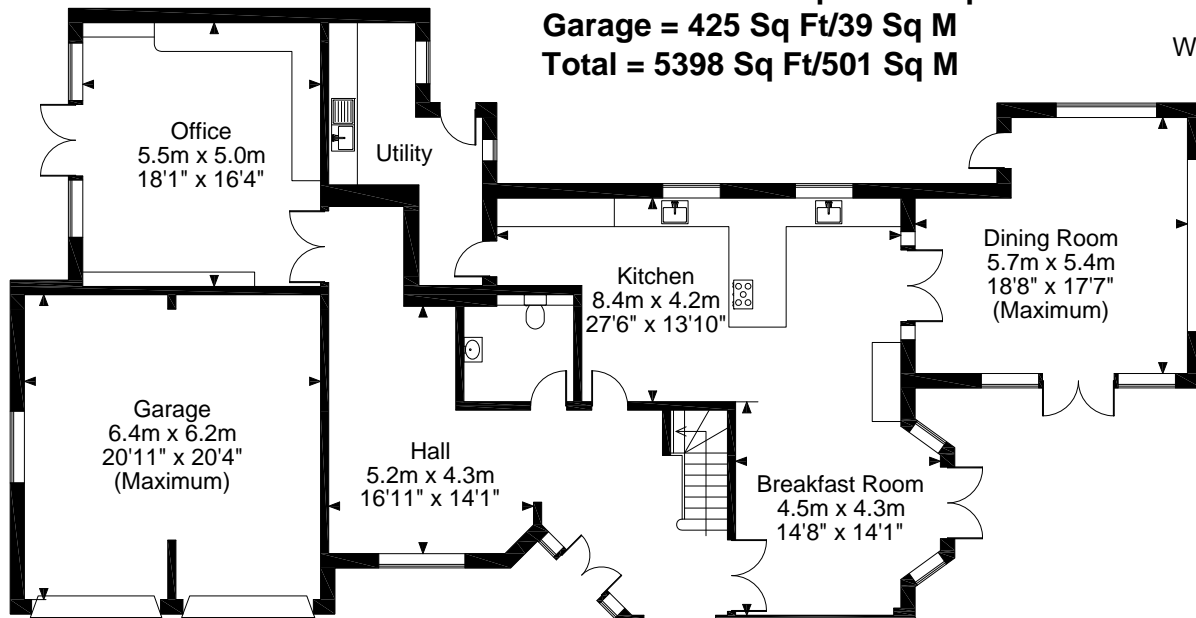
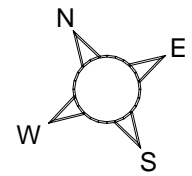
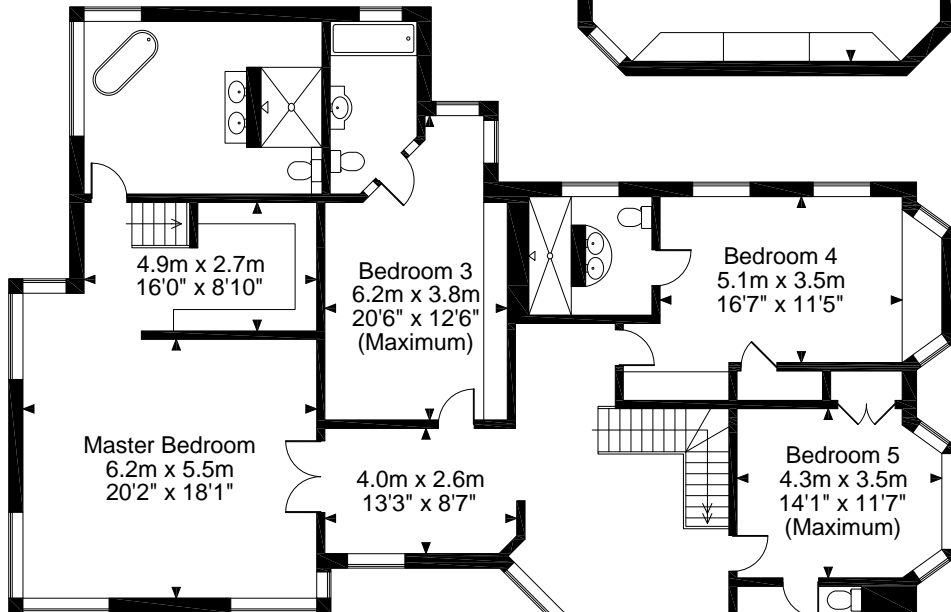
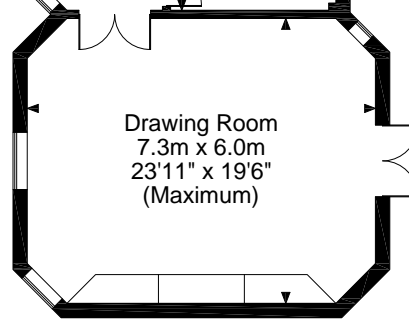


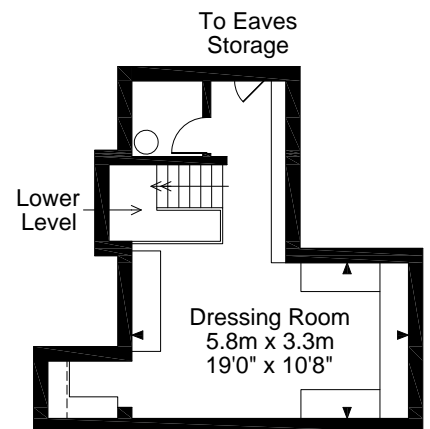
Bury Road, Poole
Approximate Gross Internal Area
Main House = 4973 Sq Ft/462 Sq M
Garage = 425 Sq Ft/39 Sq M
Total = 5398 Sq Ft/501 Sq M



Ground Floor



First Floor



Second Floor

FOR ILLUSTRATIVE PURPOSES ONLY - NOT TO SCALE

The position & size of doors, windows, appliances and other features are approximate only.

□ □ □ □ Denotes restricted head height

© ehouse. Unauthorised reproduction prohibited. Drawing ref. dig/8105648/JNM